

Ultracell®

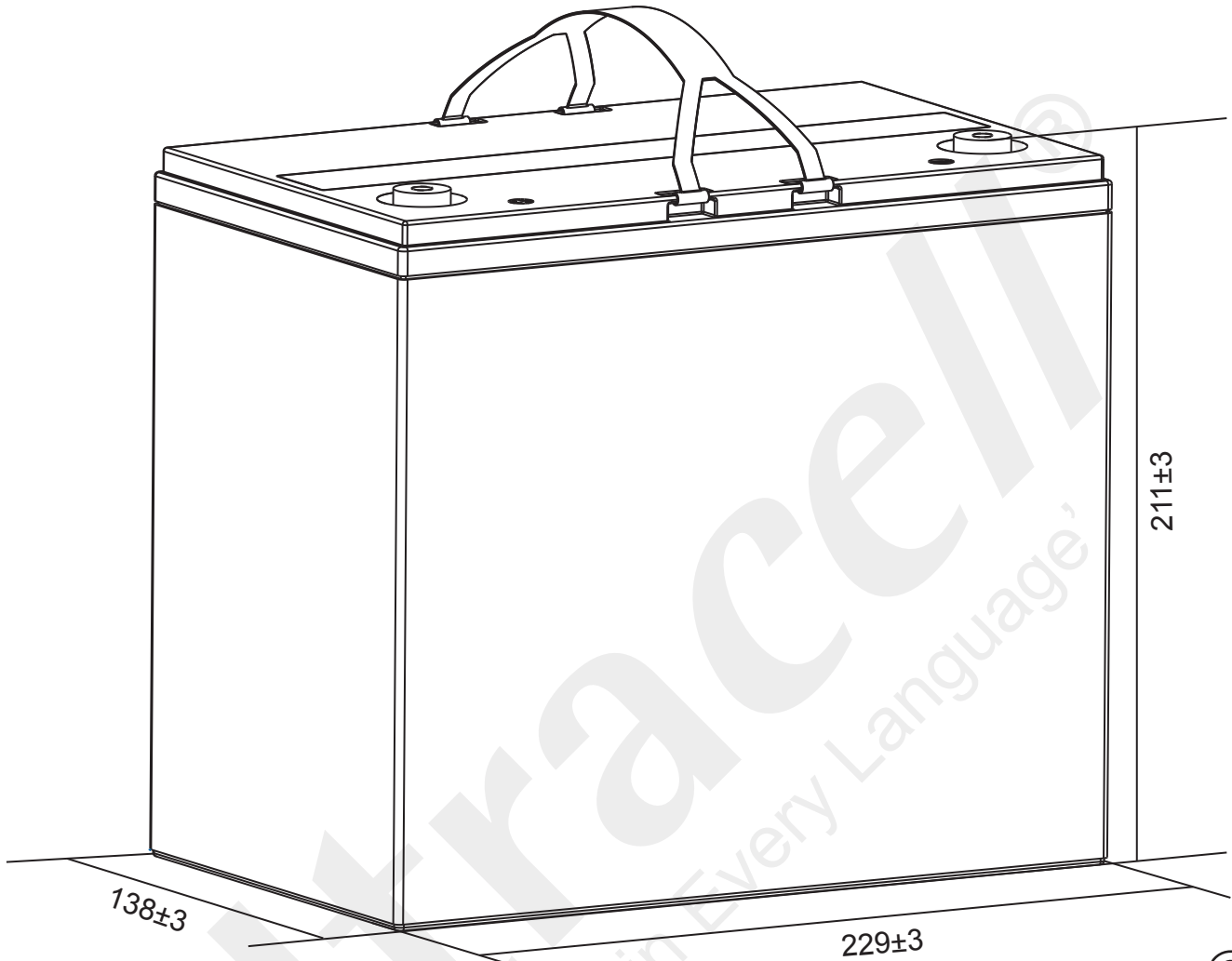
'Quality in Every Language'

UHR55-12

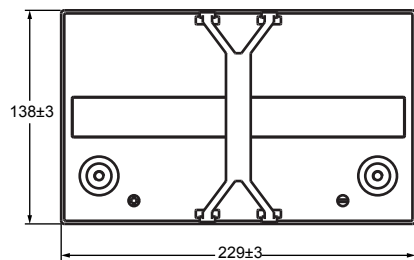
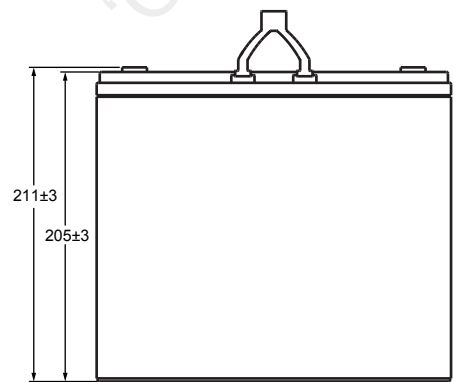
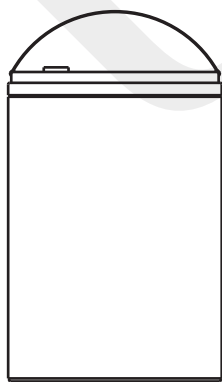
12V 55AH

185W₁₅1.67V/CELL

High Rated UPS Series



Technical Dimensions (mm)



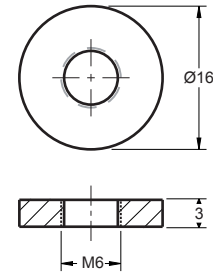


Image



Terminal Dimensions (mm)

Standard Terminal: F6



Technical Specification

Output	Nominal Voltage	12V
	Watts @ 15min, 1.67V/Cell	240.8W
Terminal Type	Standard Terminal	F6
Container Material	Standard Option	ABS
	Flame Retardant Option (FR)	ABS (UL94:VO)
Rated Capacity	(10HR 1.80V/cell, 25°C)	55.0 Ah/5.50A
	(8HR 1.80V/cell, 25°C)	52.8 Ah/6.60A
	(5HR 1.75V/cell, 25°C)	48.2 Ah/9.63A
	(3HR 1.75V/cell, 25°C)	43.8 Ah/14.6A
	(1HR 1.67V/cell, 25°C)	35.2 Ah/35.2A
Max Discharge Current	660A (5s)	
Internal Resistance	Approx 7.5mΩ	
Discharge Characteristics	Operating Temp Range	Discharge: -20 ~ 55°C Charge: 0 ~ 40°C Storage: -15 ~ 50°C
	Nominal Operating Temp Range	25 ± 3°C
	Cycle Use	Initial Charging Current less than 13.75A. Voltage 14.1V~14.4V @ 25°C Temp. Coefficient -3mV/°C
	Standby Use	Initial Charging Current less than 13.75A. Voltage 13.5V @ 25°C Temp. Coefficient -3mV/°C
	Capacity affected by Temperature	40°C 106% 25°C 100% 0°C 86%
Design Floating Life at 20°C	12 Years	

Self Discharge

Ultracell® UHR batteries may be stored for up to 6 months at 25°C and then a refresh charge is required. For higher temperatures the time intervals will be shorter.

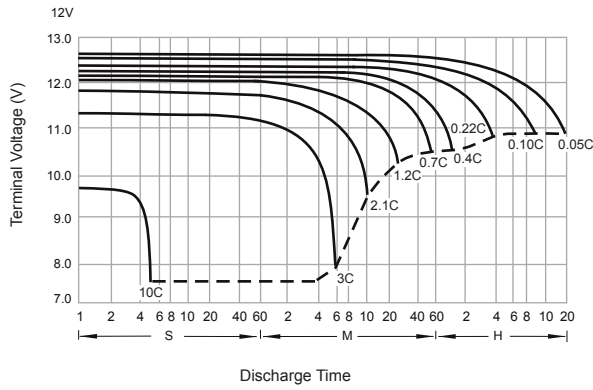
Constant Current Discharge / Constant Power Discharge At 25°C (Amperes & Watts/Cell)

A = Amperes W = Watts

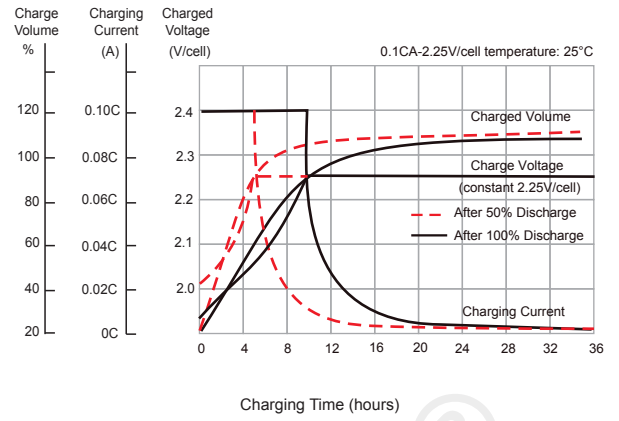
F.V/TIME	5 min	10 min	15 min	20 min	30 min	45 min	60 min	90 min	2 hours	3 hours	4 hours	5 hours	8 hours	10 hours
1.85V/cell	114.5	85.4	71.2	59.8	46.0	34.3	29.0	21.7	17.4	13.1	10.5	8.74	6.16	5.15
1.80V/cell	133.4	100.8	82.8	68.9	52.0	38.4	32.1	23.8	18.9	14.2	11.3	9.41	6.60	5.50
1.75V/cell	145.6	108.0	87.5	72.3	54.3	39.9	33.3	24.6	19.5	14.6	11.6	9.63	6.72	5.59
1.70V/cell	157.7	115.2	92.5	76.1	56.7	41.4	34.5	25.4	20.1	15.0	11.8	9.84	6.84	5.67
1.67V/cell	164.7	119.5	95.4	78.3	58.1	42.4	35.2	25.9	20.5	15.2	12.0	10.0	6.91	5.72
1.60V/cell	181.5	129.3	102.3	83.3	61.4	44.6	36.9	27.0	21.3	15.8	12.4	10.3	7.07	5.84



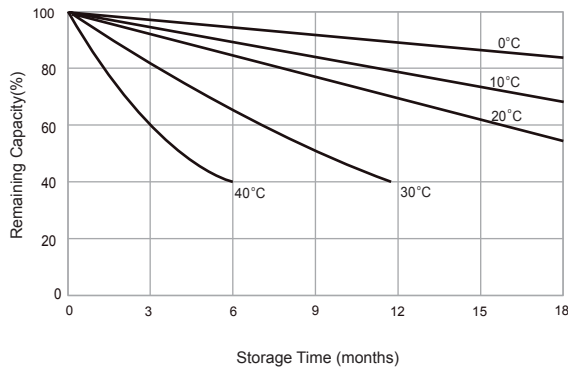
Discharge Characteristics



Float Charging Characteristics



Temperature Effects in Relation to Battery Capacity



Effect of Temperature on Long Term Float Life

