

# Product datasheet

Specifications



## TeSys D contactor - 3P(3 NO) - AC-3 - $\leq 440$ V 12 A - 220 V AC coil

LC1D12M7

### Main

Range of product	TeSys Deca
Product or component type	Contactor
Device short name	LC1D
Contactor application	Resistive load Motor control
Utilisation category	AC-4 AC-1 AC-3 AC-3e
Poles description	3P
[Ue] rated operational voltage	Power circuit: $\leq 690$ V AC 25...400 Hz Power circuit: $\leq 300$ V DC
[Ie] rated operational current	25 A (at $\leq 60$ °C) at $\leq 440$ V AC AC-1 for power circuit 12 A (at $\leq 60$ °C) at $\leq 440$ V AC AC-3 for power circuit 12 A (at $\leq 60$ °C) at $\leq 440$ V AC AC-3e for power circuit
[Uc] control circuit voltage	220 V AC 50/60 Hz

### Complementary

Motor power kW	3 kW at 220...230 V AC 50/60 Hz (AC-3) 5.5 kW at 380...400 V AC 50/60 Hz (AC-3) 5.5 kW at 415...440 V AC 50/60 Hz (AC-3) 7.5 kW at 500 V AC 50/60 Hz (AC-3) 7.5 kW at 660...690 V AC 50/60 Hz (AC-3) 3.7 kW at 400 V AC 50/60 Hz (AC-4) 3 kW at 220...230 V AC 50/60 Hz (AC-3e) 5.5 kW at 380...400 V AC 50/60 Hz (AC-3e) 5.5 kW at 415...440 V AC 50/60 Hz (AC-3e) 7.5 kW at 500 V AC 50/60 Hz (AC-3e) 7.5 kW at 660...690 V AC 50/60 Hz (AC-3e)
Motor power hp	0.5 hp at 115 V AC 50/60 Hz for 1 phase motors 2 hp at 230/240 V AC 50/60 Hz for 1 phase motors 3 hp at 200/208 V AC 50/60 Hz for 3 phases motors 3 hp at 230/240 V AC 50/60 Hz for 3 phases motors 7.5 hp at 460/480 V AC 50/60 Hz for 3 phases motors 10 hp at 575/600 V AC 50/60 Hz for 3 phases motors
Compatibility code	LC1D
Pole contact composition	3 NO
Protective cover	With
[Ith] conventional free air thermal current	25 A (at 60 °C) for power circuit 10 A (at 60 °C) for signalling circuit
Irms rated making capacity	250 A at 440 V for power circuit conforming to IEC 60947 140 A AC for signalling circuit conforming to IEC 60947-5-1 250 A DC for signalling circuit conforming to IEC 60947-5-1
Rated breaking capacity	250 A at 440 V for power circuit conforming to IEC 60947

Price is "List Price" and may be subject to a trade discount – check with your local distributor or retailer for actual price.

<b>[Icw] rated short-time withstand current</b>	105 A 40 °C - 10 s for power circuit 210 A 40 °C - 1 s for power circuit 30 A 40 °C - 10 min for power circuit 61 A 40 °C - 1 min for power circuit 100 A - 1 s for signalling circuit 120 A - 500 ms for signalling circuit 140 A - 100 ms for signalling circuit
<b>Associated fuse rating</b>	10 A gG for signalling circuit conforming to IEC 60947-5-1 40 A gG at <= 690 V coordination type 1 for power circuit 25 A gG at <= 690 V coordination type 2 for power circuit
<b>Average impedance</b>	2.5 mOhm - Ith 25 A 50 Hz for power circuit
<b>Power dissipation per pole</b>	0.36 W AC-3 1.56 W AC-1 0.36 W AC-3e
<b>[Ui] rated insulation voltage</b>	Power circuit: 690 V conforming to IEC 60947-4-1 Power circuit: 600 V CSA certified Power circuit: 600 V UL certified Signalling circuit: 690 V conforming to IEC 60947-1 Signalling circuit: 600 V CSA certified Signalling circuit: 600 V UL certified
<b>Overvoltage category</b>	III
<b>Pollution degree</b>	3
<b>[Uimp] rated impulse withstand voltage</b>	6 kV conforming to IEC 60947
<b>Safety reliability level</b>	B10d = 1369863 cycles contactor with nominal load conforming to EN/ISO 13849-1 B10d = 20000000 cycles contactor with mechanical load conforming to EN/ISO 13849-1
<b>Mechanical durability</b>	15 Mcycles
<b>Electrical durability</b>	2 Mcycles 12 A AC-3 at Ue <= 440 V 0.8 Mcycles 25 A AC-1 at Ue <= 440 V 2 Mcycles 12 A AC-3e at Ue <= 440 V
<b>Control circuit type</b>	AC at 50/60 Hz standard
<b>Coil technology</b>	Without built-in suppressor module
<b>Control circuit voltage limits</b>	0.3...0.6 Uc (-40...70 °C):drop-out AC 50/60 Hz 0.8...1.1 Uc (-40...60 °C):operational AC 50 Hz 0.85...1.1 Uc (-40...60 °C):operational AC 60 Hz 1...1.1 Uc (60...70 °C):operational AC 50/60 Hz
<b>Inrush power in VA</b>	70 VA 60 Hz cos phi 0.75 (at 20 °C) 70 VA 50 Hz cos phi 0.75 (at 20 °C)
<b>Hold-in power consumption in VA</b>	7.5 VA 60 Hz cos phi 0.3 (at 20 °C) 7 VA 50 Hz cos phi 0.3 (at 20 °C)
<b>Heat dissipation</b>	2...3 W at 50/60 Hz
<b>Operating time</b>	12...22 ms closing 4...19 ms opening
<b>Maximum operating rate</b>	3600 cyc/h at 60 °C

<b>Connections - terminals</b>	<p>Power circuit: screw clamp terminals 1 1...4 mm<sup>2</sup> - cable stiffness: flexible without cable end</p> <p>Power circuit: screw clamp terminals 2 1...4 mm<sup>2</sup> - cable stiffness: flexible without cable end</p> <p>Power circuit: screw clamp terminals 1 1...4 mm<sup>2</sup> - cable stiffness: flexible with cable end</p> <p>Power circuit: screw clamp terminals 2 1...2.5 mm<sup>2</sup> - cable stiffness: flexible with cable end</p> <p>Power circuit: screw clamp terminals 1 1...4 mm<sup>2</sup> - cable stiffness: solid without cable end</p> <p>Power circuit: screw clamp terminals 2 1...4 mm<sup>2</sup> - cable stiffness: solid without cable end</p> <p>Control circuit: screw clamp terminals 1 1...4 mm<sup>2</sup> - cable stiffness: flexible without cable end</p> <p>Control circuit: screw clamp terminals 2 1...4 mm<sup>2</sup> - cable stiffness: flexible without cable end</p> <p>Control circuit: screw clamp terminals 1 1...4 mm<sup>2</sup> - cable stiffness: flexible with cable end</p> <p>Control circuit: screw clamp terminals 2 1...2.5 mm<sup>2</sup> - cable stiffness: flexible with cable end</p> <p>Control circuit: screw clamp terminals 1 1...4 mm<sup>2</sup> - cable stiffness: solid without cable end</p> <p>Control circuit: screw clamp terminals 2 1...4 mm<sup>2</sup> - cable stiffness: solid without cable end</p>
<b>Tightening torque</b>	<p>Power circuit: 1.7 N.m - on screw clamp terminals - with screwdriver flat Ø 6 mm</p> <p>Power circuit: 1.7 N.m - on screw clamp terminals - with screwdriver Philips No 2</p> <p>Control circuit: 1.7 N.m - on screw clamp terminals - with screwdriver flat Ø 6 mm</p> <p>Control circuit: 1.7 N.m - on screw clamp terminals - with screwdriver Philips No 2</p> <p>Control circuit: 1.7 N.m - on screw clamp terminals - with screwdriver pozidriv No 2</p> <p>Power circuit: 1.7 N.m - on screw clamp terminals - with screwdriver pozidriv No 2</p>
<b>Auxiliary contact composition</b>	1 NO + 1 NC
<b>Auxiliary contacts type</b>	<p>type mechanically linked 1 NO + 1 NC conforming to IEC 60947-5-1</p> <p>type mirror contact 1 NC conforming to IEC 60947-4-1</p>
<b>Signalling circuit frequency</b>	25...400 Hz
<b>Minimum switching voltage</b>	17 V for signalling circuit
<b>Minimum switching current</b>	5 mA for signalling circuit
<b>Insulation resistance</b>	> 10 MOhm for signalling circuit
<b>Non-overlap time</b>	<p>1.5 ms on de-energisation between NC and NO contact</p> <p>1.5 ms on energisation between NC and NO contact</p>
<b>Mounting support</b>	<p>Rail</p> <p>Plate</p>

## Environment

<b>Standards</b>	<p>CSA C22.2 No 14</p> <p>EN 60947-4-1</p> <p>EN 60947-5-1</p> <p>IEC 60947-4-1</p> <p>IEC 60947-5-1</p> <p>UL 60947-4-1</p> <p>IEC 60335-1:Clause 30.2</p> <p>IEC 60335-2-40:Annex JJ</p> <p>UL 60335-2-40:Annex JJ</p> <p>CSA C22.2 No 60947-4-1</p>
<b>Product certifications</b>	<p>UL</p> <p>CCC</p> <p>CSA</p> <p>Marine</p> <p>UKCA</p> <p>EAC</p> <p>CB Scheme</p>
<b>IP degree of protection</b>	IP20 front face conforming to IEC 60529
<b>Protective treatment</b>	TH conforming to IEC 60068-2-30
<b>Climatic withstand</b>	<p>conforming to IACS E10 exposure to damp heat</p> <p>conforming to IEC 60947-1 Annex Q category D exposure to damp heat</p>

<b>Permissible ambient air temperature around the device</b>	-40...60 °C 60...70 °C with derating
<b>Operating altitude</b>	0...3000 m
<b>Fire resistance</b>	850 °C conforming to IEC 60695-2-1
<b>Flame retardance</b>	V1 conforming to UL 94
<b>Mechanical robustness</b>	Vibrations contactor open (2 Gn, 5...300 Hz) Vibrations contactor closed (4 Gn, 5...300 Hz) Shocks contactor open (10 Gn for 11 ms) Shocks contactor closed (15 Gn for 11 ms)
<b>Height</b>	77 mm
<b>Width</b>	45 mm
<b>Depth</b>	86 mm
<b>Net weight</b>	0.325 kg

## Packing Units

<b>Unit Type of Package 1</b>	PCE
<b>Number of Units in Package 1</b>	1
<b>Package 1 Height</b>	5.000 cm
<b>Package 1 Width</b>	9.200 cm
<b>Package 1 Length</b>	11.100 cm
<b>Package 1 Weight</b>	352.000 g
<b>Unit Type of Package 2</b>	S02
<b>Number of Units in Package 2</b>	20
<b>Package 2 Height</b>	15.000 cm
<b>Package 2 Width</b>	30.000 cm
<b>Package 2 Length</b>	40.000 cm
<b>Package 2 Weight</b>	7.367 kg

## Contractual warranty

<b>Warranty</b>	18 months
-----------------	-----------



## Environmental Data

Schneider Electric aims to achieve Net Zero status by 2050 through supply chain partnerships, lower impact materials, and circularity via our ongoing “Use Better, Use Longer, Use Again” campaign to extend product lifetimes and recyclability.

[Environmental Data explained >](#)

[How we assess product sustainability >](#)

### Environmental footprint

Total lifecycle Carbon footprint **19**

Environmental Disclosure [Product Environmental Profile](#)

### Use Better

#### Materials and Substances

Packaging made with recycled cardboard **Yes**

Packaging without single use plastic **Yes**

[EU RoHS Directive](#) **Compliant**

REACH Regulation [REACH Declaration](#)

PVC free **Yes**

### Use Again

#### Repack and remanufacture

End of life manual availability [End of Life Information](#)

Take-back **No**

WEEE  **The product must be disposed on European Union markets following specific waste collection and never end up in rubbish bins**

Dimensions Drawings

Dimensions



- (1) Including LAD 4BB
- (2) Minimum electrical clearance

LC1		D09...D18	D093...D123	D099...D129
<b>b</b>	without add-on blocks	77	99	80
<b>b1</b>	with LAD 4BB	94	107	95.5
	with LA4 D•2	110 <sup>(1)</sup>	123 <sup>(1)</sup>	111.5 <sup>(1)</sup>
	with LA4 DF, DT	119 <sup>(1)</sup>	132 <sup>(1)</sup>	120.5 <sup>(1)</sup>
	with LA4 DW, DL	126 <sup>(1)</sup>	139 <sup>(1)</sup>	127.5 <sup>(1)</sup>
<b>c</b>	without cover or add-on blocks	84	84	84
	with cover, without add-on blocks	86	86	86
<b>c1</b>	with LAD N or C (2 or 4 contacts)	117	117	117
<b>c2</b>	with LA6 DK10, LAD 6K10	129	129	129
<b>c3</b>	with LAD T, R, S	137	137	137
	with LAD T, R, S and sealing cover	141	141	141
<b>(1)</b>	Including LAD 4BB.			

## Connections and Schema

### Wiring

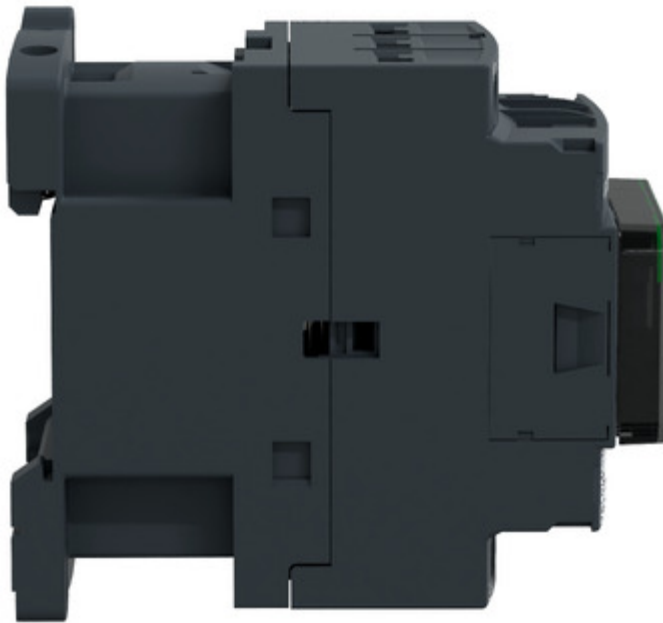
---

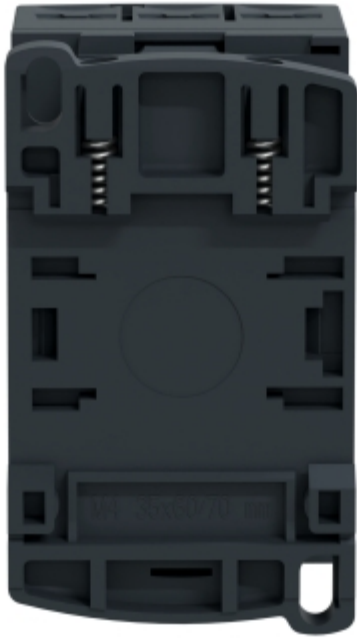


Image of product / Alternate images

**Alternative**

---





Technical Illustration

Assembly's dimensions

---

